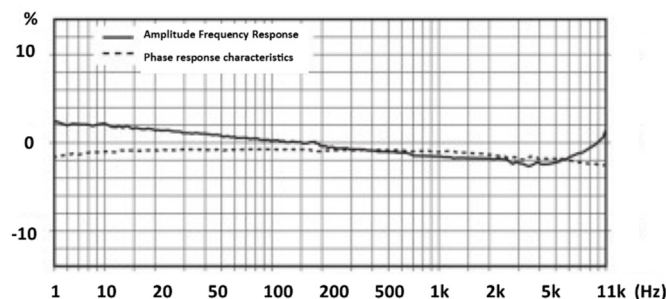
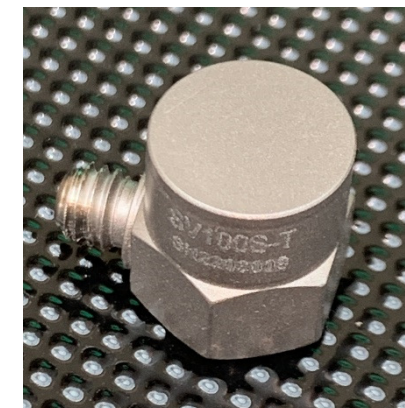
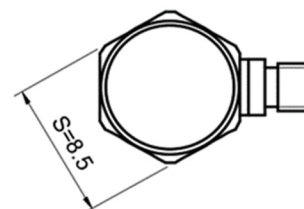
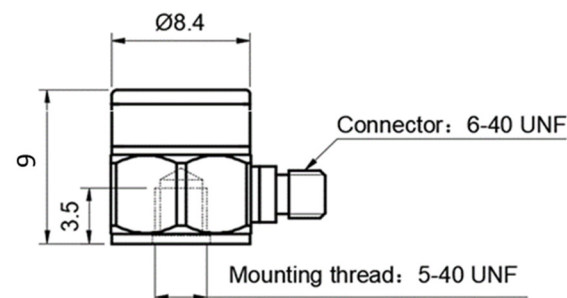


- Sub Miniature IEPE Accelerometer
- Shear design
- Piezoelectric ceramic PZT-5
- Sensitivity – 100mV/g
- Mass – 2.6grams
- 10-32UNF side entry connector
- Adhesive Mount

The SV100S-A is a sub-miniature monoaxial IEPE accelerometer with a side entry 10/32UNF microdot connector and a flat base for adhesive mounting. Featuring a shear design PZT-5 sensing element the SV100S-A provides high accuracy with wide bandwidth up to 10kHz

Specification	Metric	Imperial
Sensitivity	10.2mV/(m/s ²)	100mV/g
Measurement Range (pk)	±490m/s ²	±50g
Frequency Range ±10%	1 to 10000 Hz	
Resonant Frequency	≥50 kHz	
Non-Linearity	≤1 %	
Transverse Sensitivity	≤5 %	
Electrical Noise Floor	0.005m/s ² rms	0.0005g rms
Overload Limit (Shock)	±4900(m/s ²)pk	±500gpk
Operating Temp. Range	-55 to +125°C	-67 to +257°F
Polarity ↑	Positive	
Compliance Voltage (Supply)	+18 to +28 VDC	
Current range	2 – 10mA	
Output Bias Voltage	11VDC ± 1.5VDC	
Size (excluding connector)	8.5mmA/Fx11 mm	Ø0.33" A/Fx0.43"
Weight	2.6gm	0.092oz
Sensing Geometry	Shear	
Sensing Element Material	PZT-5	
Case Material	Titanium	
Connector Position	Side	
Case sealing	Hermetic	
Electrical Connection Type	M3.5 Miniature Microdot	
Mounting	Flat base for adhesive mounting	



Kemo has a range of cable assemblies available for use with the SV100S-A and other IEPE accelerometers.

13B2-30 – 3m(10ft) 10/32UNF microdot to BNC plug
 13B2-50 – 5m(15ft) 10/32UNF microdot to BNC plug
 13B1-30 – 3m(10ft) 10/32UNFmdot to 10/32UNFmdot
 13B1-50 – 5m(15ft) 10/32UNFmdot to 10/32UNFmdot

Kemo Limited

Unit 1, Dene Yard
 Green Street Green Road,
 Dartford, Kent. DA2 8DH

www.kemo.com sales@kemo.com

Iss.2 – December 2022